



**MODEL KMW2026-M26
60W CW
291MHz +/-5MHz**

OEM application, break between stages, for insertion customer BP filter. Except as noted, specifications met for supply voltage ranging from 24-30V. Module Paired/tested with supplied LP filter.

Power	60 W CW
FREQ	291 MHz +/-5 MHz
GAIN/flatness window @ 60w CW [5db attn inbreak]	63 dB+/-0.4 dB
Harmonics @ 60w CW with LP filter.....	<-80 dBc
Current @ 60w CW @ 28.2v	<7 A
AM distortion 21w +95% mod.....	<3%
ON/off functions	On/off time <150 usec
.....	ON/off ratio > -80 dB
.....	Off current <100 ma
Enclosure operating temperature	-40C to +70 °C
Overtemperature shutdown/restore.....	90C/75C
Size with connectors.....	7.1" x 4.25" x 1.2

Break spec

Break out (J4)	gain 36dB +/-1 dB
.....	Noise figure < 0.9 dB
.....	nominal Output Impedance 50 Ω
.....	Output VSWR < 2.0
Break in/final (J3).....	gain 33 dB +/- 1 dB
.....	Noise figure < 9 dB
.....	nominal input Impedance 50 Ω
.....	Input VSWR < 2.0
Breaks isolation/leakage.....	60 dB

Protections

Module will survive 60w into open/short indefinitely
Module will survive 5db overdrive over Input, for rated 60w
* at 28v module could produce up to 200w saturated power

RF connectors

Input/Output/Breakpoints.....SMA

Interface DB-9

Pin 1, 2, 3.....	-DC/ground
Pin 7, 8, 9 DC Filtered.....	+DC
Pin 4 On/Off [pull down/sink to turn ON with <5ma].....	0.8v +/-0.1v =ON
	≥4V or not connected = OFF
Pin 5 Overtemp Status Pin.....	≥ 4V = normal
	< 0.5v = overtemp
Pin 6 Gain Control [Optional].....	not used

Vibration..... Sinusoidal vibration, double amplitude of 0.1 inches from 5 to 20 Hz and from +2g to -2g between 20 and 2000 Hz. See attached for drawing

Mechanical

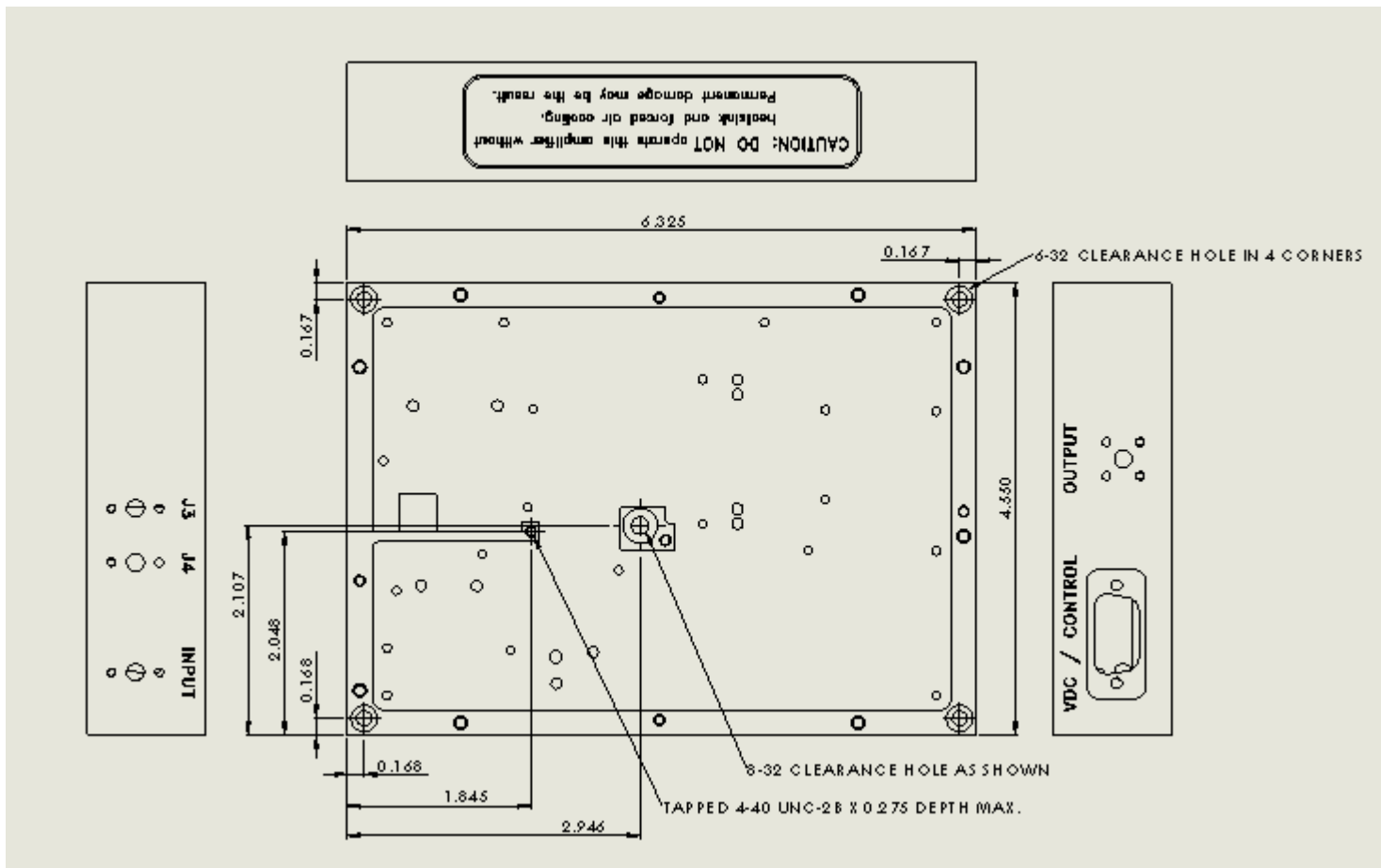
See attached

DOC-0000020 Rev C
07 February 2018

This specification is subject to change without notice.



modular rf



KMW2026-M26 ENCLOSURE

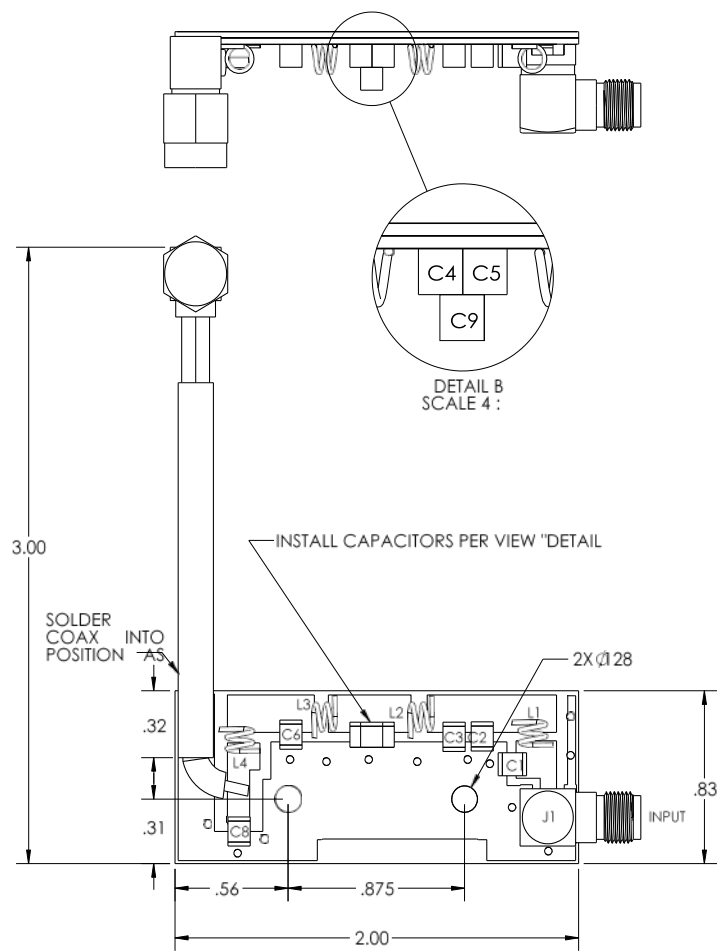
This specification is subject to change without notice.

ar • modular rf

21222 30th Dr SE, Suite 200 • Bothell, Washington 98021 • 425-485-9000 • Fax 425-486-9657 • www.ar-worldwide.com



modular rf



PCB ASSEMBLY LOW PASS FILTER

This specification is subject to change without notice.

ar • modular rf

21222 30th Dr SE, Suite 200 • Bothell, Washington 98021 • 425-485-9000 • Fax 425-486-9657 • www.ar-worldwide.com