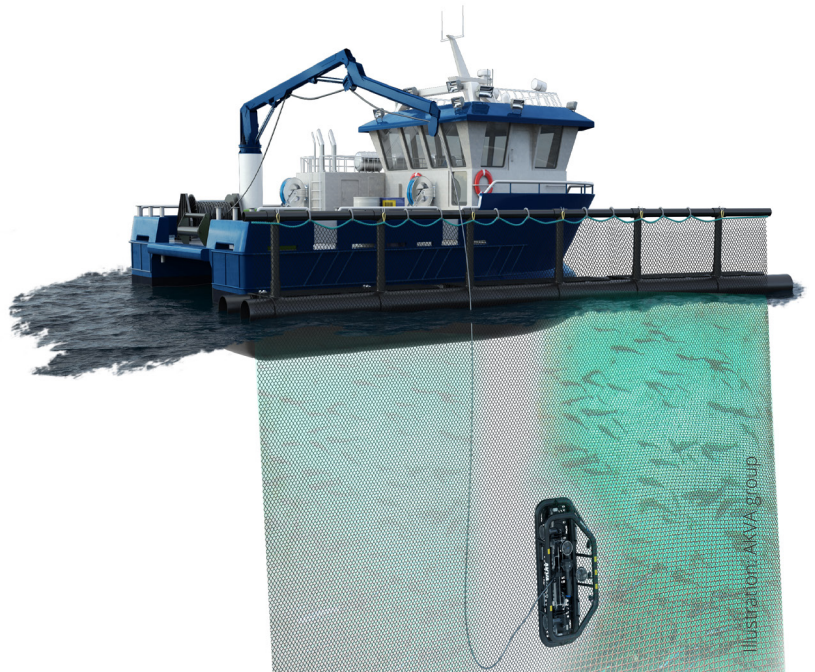


CageSense® NETCLEAN GPS



- WL-11001
FNC8 customized

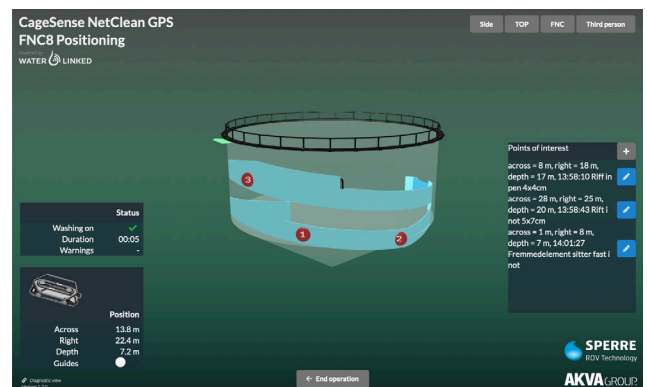
DESCRIPTION

Have you lost track of where you have inspected the net, and lost control of where you are in the cage? CageSense® NetClean GPS provides overview of where you have been and your position in the cage during inspection

When using a location unit on your FNC8 net cleaner it communicates with receiver antennas near the service vessel - giving visual position status during operation. The system is based on hydroacoustic communication where the frequency range is adapted to environments with a high degree of noise such as swim bladder in salmon, cavitation and mechanical noise. The communication signals bypass the typical noise common in fish farms.

WHY NETCLEAN GPS?

- Exact, realtime position in cage
- Know what is cleaned and what remains
- A status- and end report is automatically generated after completed inspection
- POI (Point of Interest)
- No counting of pen rope during netcleaning
- Safety for new net clean operators



MECANICAL

Total weight	
Dimensions topside	Rackmount 19", 1U
Locator P2	
Operating temperature	- 10 °C to + 60 °C

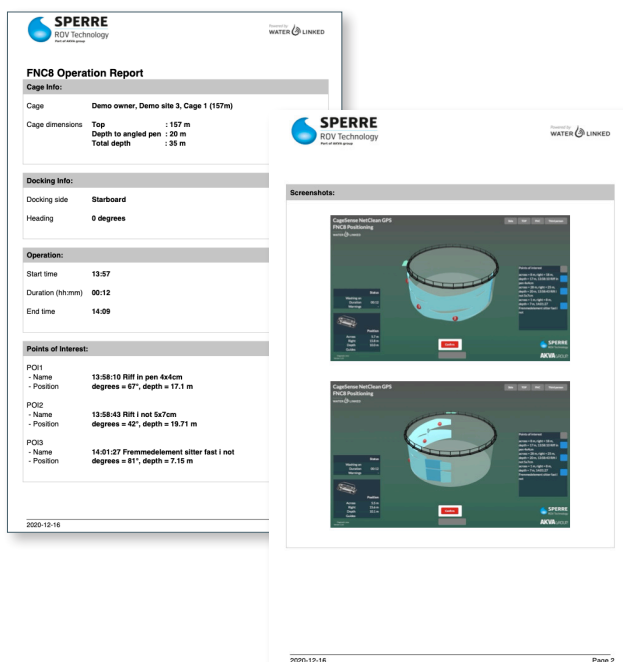
TOPSIDE ELECTRICAL

Input volt	10-30 V
Power consumption	0.25A at 12V
Power-on current surge	2.30A at 12V
Communication	WiFi (802.11ac/a/b/g/n) Ethernet (100 Mbps)
Protocol	Water Linked API
User interface	Web based GUI (local connection) 3D NetClean GUI

LOCATOR ELECTRICAL

Input volt	24 volt
Power consumption	830 mAh

OPERATION REPORT



ACOUSTICS/PERFORMANCE

Range	100 eller 300 meter radius (depending on version)
Ping rate/frequency	2 hz
Drift	Locator P2: ~1m/6h
Frequency	31.25-250 kHz (200 kHz typically)
Directivity	Omnidirectional (360 degrees)
Operating principle	Time of flight, triangulation
Integrated IMU	Yost Labs TSS-NANO TDK Invensense ICM-20948
External GPS	Garmin HVS 16

APPROVALS

CE

ORDERING GUIDE

WL-11001

SYSTEM PART NUMBER

TOPSIDE	
WL-21025	19" Rack Mount
WL-21026	Pelican Case (option)

KIT CONTENT

BASELINE	
4x WL-21005	Receiver-D1 (10/50/100m)
1x WL-21027	Antenna
1x WL-21024	Locator-P2

REQUIREMENTS TO CLIENT

- PC/web browser and screen
- GPS coverage
- 10-30 VDC

LIMITATIONS

- Visibility in blindspot of cleaner vessel
- Visibility in cavitation area close to cleaner vessel

Water Linked reserves all rights to this document and the information contained herein. Products, names, logos and designs described herein may in whole or in part be subject to intellectual property rights. The information contained herein is provided "as-is". No warranty of any kind, either expressed or implied, is made in relation to the accuracy, reliability, fitness for a particular purpose or content of this document. This document may be revised by Water Linked at any time. For most recent documents, please visit www.waterlinked.com
Copyright © 2020, Water Linked.